

**Market Information Systems: Fundamental to Structured
Trade and Food Security**

3rd USAID Feed the Future East Africa Regional meeting

December 8, 2011

Regional Market Information Systems

Key Activities

- **Improving data quality and integrity – harmonizing regional data collection methodologies**
- **EAGC's Regional Agricultural Trade Intelligence Network (RATIN) system – building an integrated regional platform, expanding functionality, introducing real-time products and planning for the future**

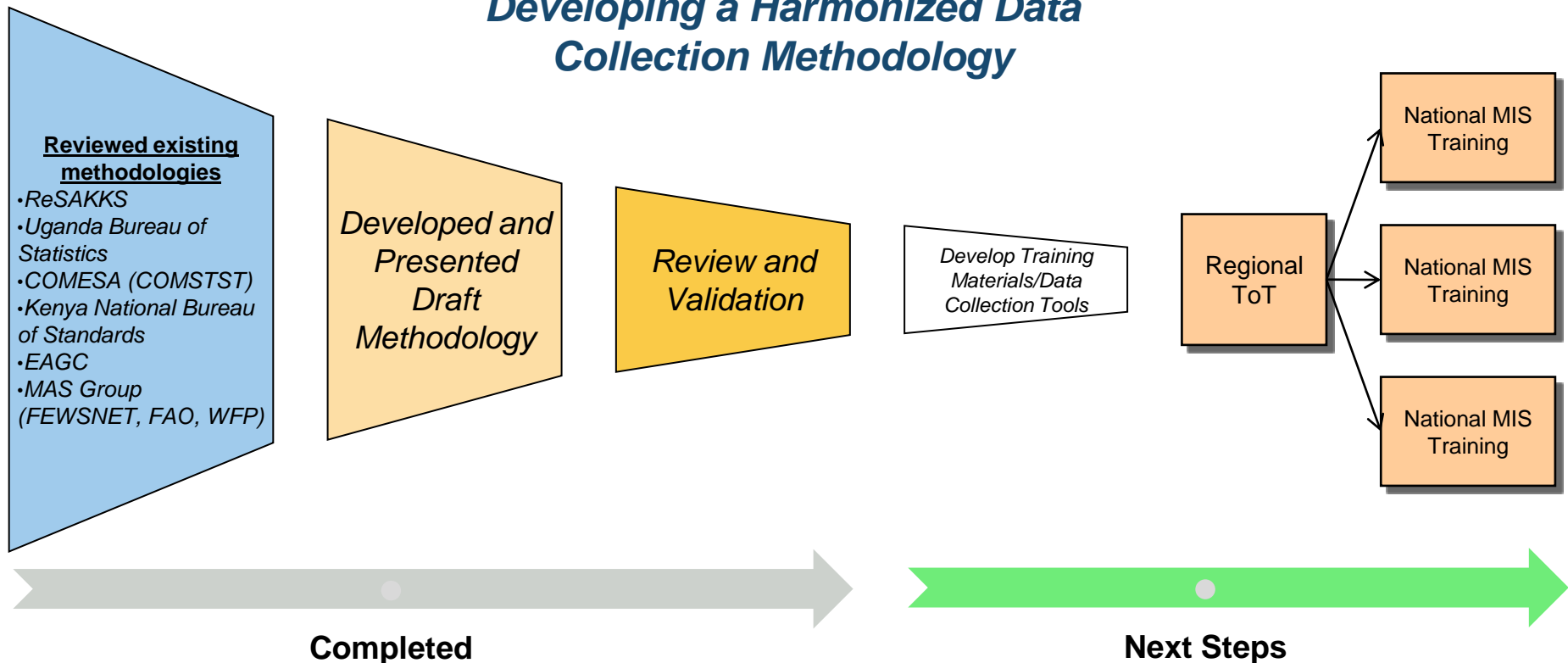
Strengthening System Integrity


Addressing data inconsistency and incompatibility

The Problem: Different information providers using different collection methodologies providing conflicting data from the same market for the same day. Different approaches in different countries makes regional data comparison difficult.


The Result: Fundamental mistrust in existing systems forces businesses to rely on informal networks, which may not provide a complete picture. Decisions often made without understanding the regional context.

Developing a Harmonized Data Collection Methodology






Regional Agricultural Trade Intelligence Network



a service of EAGGC



EASTERN AFRICA GRAIN COUNCIL

Ratin Trade Link: [Open an Account](#) | [Sign in](#)

Search: [Go](#)

- Home
- About RATIN
- Production Data
- Monthly Price Data
- Food Balance Sheet
- Regional Trade Flows
- Regulatory Requirements
- Useful Links
- Contacts
- EAGC Trade Link
- Trade Directory

Newsletter
Subscription is free

Wed 7 Dec 2011 [RSS](#)

WELCOME TO RATIN

RATIN was developed to help reduce regional food insecurity by strengthening the ability of markets to provide access to affordable food to poor households and improve food availability through providing adequate incentives to producers. It came out of the realization that although there are households among the food insecure that are structurally poor and are heavily dependent on food...[Read More](#)

➤ **Food Balance Sheet:** [View the Estimated Maize, Wheat & Rice Balance Sheet](#)

✕ **Eastern Africa Food & Trade Bulletin**
» Prices Analysis for the Week Ending December 3, 2011

Usage Statistics

2,300 Subscribers
6,000 Monthly Users

SMS To Get Commodity Prices
You can now get the commodity prices through your mobile phone... [Get Details](#)

Maize Beans Rice Wheat
Sorghum Millet

Daily Wholesale Maize prices

| Market | USD/MT | Date |
|---------------|--------|----------|
| Bujumbura | 450 | 6 Dec 11 |
| Dar es salaam | 242 | 6 Dec 11 |
| Kampala | 247 | 6 Dec 11 |
| Kigali | 370 | 6 Dec 11 |
| Nairobi | 400 | 6 Dec 11 |

[Complete Daily Chart](#)

Maize Beans Rice Wheat
Sorghum Millet

Price Information and Analysis

The focus of the current system

Other Commodities

Wheat – 20 markets
Sorghum – 27 markets
Millet – 26 markets

Daily Wholesale Prices

Maize

| Market | USD/MT | Date |
|---------------|--------|----------|
| Bujumbura | 450 | 2 Dec 11 |
| Dar es salaam | 240 | 2 Dec 11 |
| Kampala | 244 | 2 Dec 11 |
| Kigali | 420 | 2 Dec 11 |
| Nairobi | 400 | 2 Dec 11 |

27 Markets

| Market | USD/MT | Week |
|---------------|--------|-------------------|
| Bujumbura | 466 | 27-Sat 3 Dec 2011 |
| Dar es salaam | 239 | 27-Sat 3 Dec 2011 |
| Kampala | 258 | 27-Sat 3 Dec 2011 |
| Kigali | 402 | 27-Sat 3 Dec 2011 |
| Nairobi | 397 | 27-Sat 3 Dec 2011 |

Beans

| Market | USD/MT | Date |
|---------------|--------|----------|
| Bujumbura | 862 | 2 Dec 11 |
| Dar es salaam | 780 | 2 Dec 11 |
| Kampala | 511 | 2 Dec 11 |
| Kigali | 471 | 2 Dec 11 |
| Nairobi | 685 | 2 Dec 11 |

Weekly Wholesale Prices

| Market | USD/MT | Week |
|---------------|--------|-------------------|
| Bujumbura | 844 | 27-Sat 3 Dec 2011 |
| Dar es salaam | 776 | 27-Sat 3 Dec 2011 |
| Kampala | 546 | 27-Sat 3 Dec 2011 |
| Kigali | 486 | 27-Sat 3 Dec 2011 |
| Nairobi | 687 | 27-Sat 3 Dec 2011 |

27 Markets

Rice

| Market | USD/MT | Date |
|---------------|--------|----------|
| Bujumbura | 1480 | 2 Dec 11 |
| Dar es salaam | 860 | 2 Dec 11 |
| Kampala | 1180 | 2 Dec 11 |
| Kigali | 1010 | 2 Dec 11 |
| Nairobi | 825 | 2 Dec 11 |

23 Markets

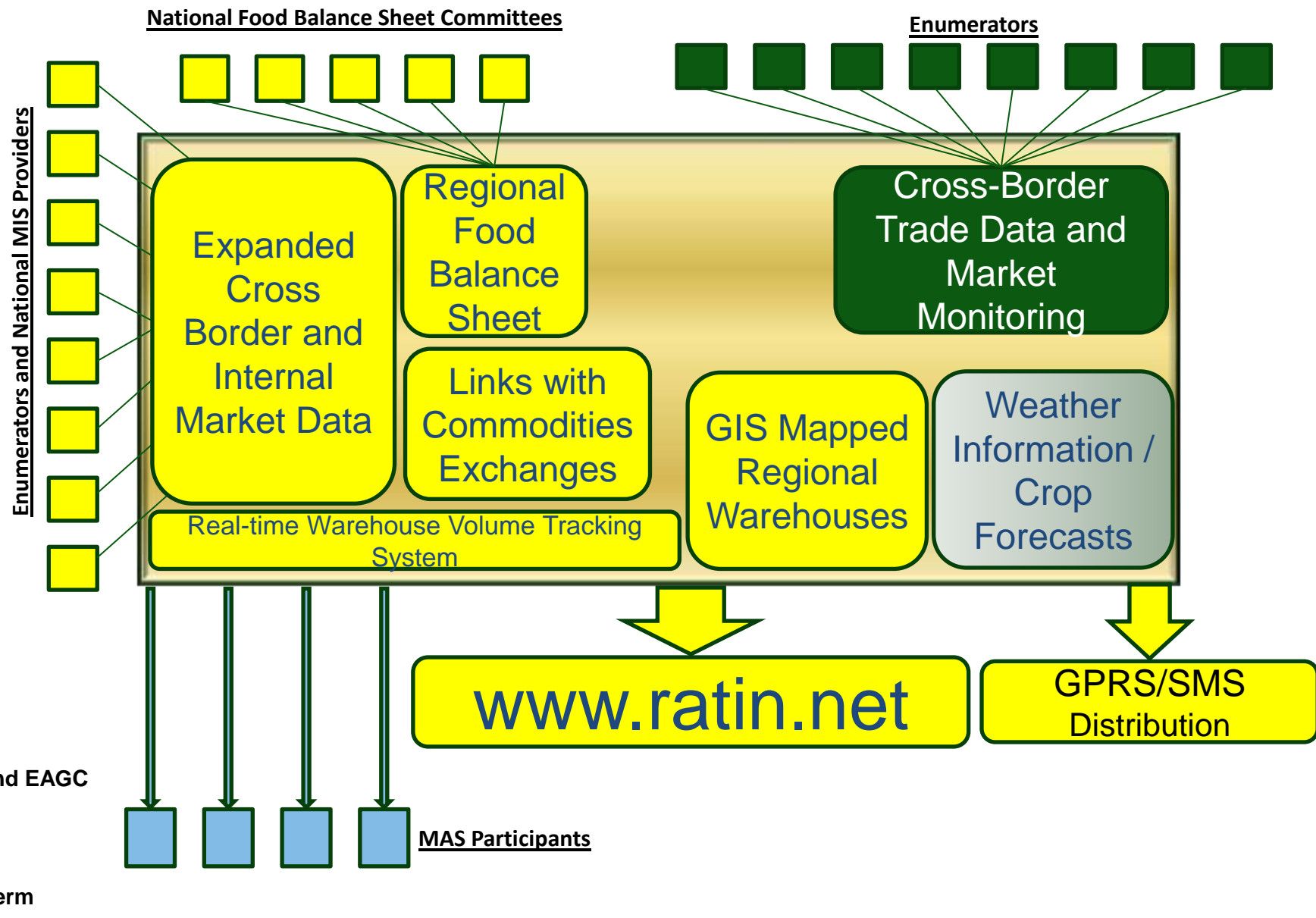
| Market | USD/MT | Week |
|---------------|--------|-------------------|
| Bujumbura | 1474 | 27-Sat 3 Dec 2011 |
| Dar es salaam | 863 | 27-Sat 3 Dec 2011 |
| Kampala | 1187 | 27-Sat 3 Dec 2011 |
| Kigali | 1013 | 27-Sat 3 Dec 2011 |
| Nairobi | 819 | 27-Sat 3 Dec 2011 |

Country Coverage

Burundi – 1 Market
Kenya – 6 Markets
Rwanda – 4 Markets
Tanzania – 9 Markets
Uganda – 5 Markets
UG/KE – 2 Markets

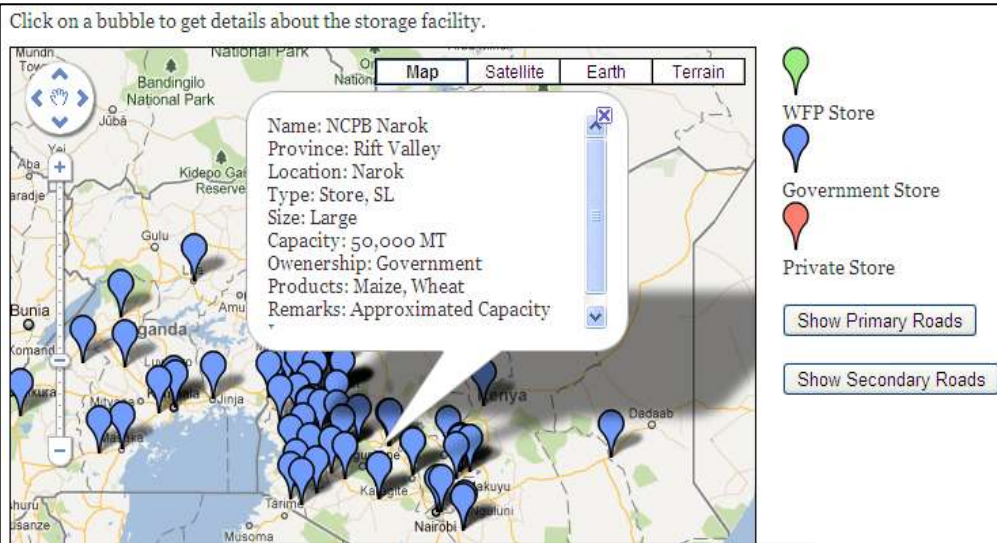
The Future RATIN (in development)

Greater Functionality Designed to Facilitate Regional Trade

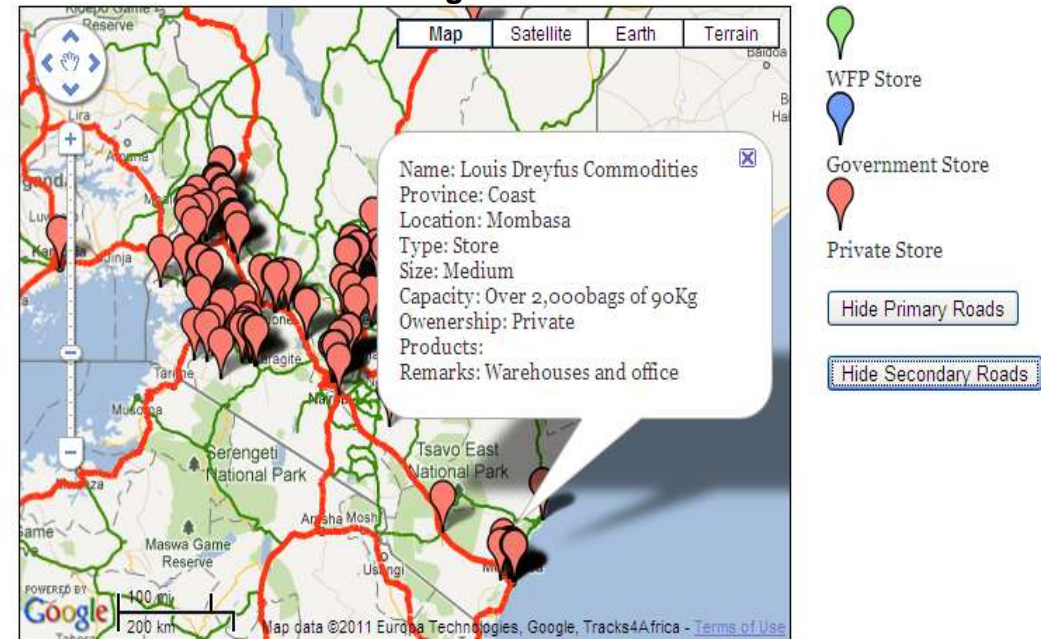


GIS Mapping the Region's Storage Facilities

Towards integrated real-time information



- Tanzania and Rwanda mapping exercises just completed - data being uploaded to E.A. Corridors (TZ – 82 and RW – 32)
- Collaborated with MLI and LEAD Projects on the Uganda mapping
- MLI also provided data on Kenya, Malawi, Rwanda, Burundi and Eastern DRC. Data being cross-checked
- Integrating East African Corridors into RATIN
- EAGC developing a real-time volume tracking system to pilot across the region
- Just the beginning. Needs to be augmented with medium and small-scale storage



Real-time Price Information and Analysis

Developing Linkages with the Region's Commodities Exchanges

ACE Trade Platform

| Item Details | UoM | Bids | | Offers | | Incoterm | Delivery Location | Deals | | Forwards |
|--------------------------|-----|-----------|-------------|-----------|-------------|----------|---------------------------|-----------|-------------|----------|
| | | Value(\$) | Volume (MT) | Value(\$) | Volume (MT) | | | Value(\$) | Volume (MT) | |
| GROUND NUTS ,FAQ | MT | 1077.84 | 500.00 | 0.00 | 0.00 | DAP | KANENGO ,LILONGWE ,MALAWI | 0.00000 | 0.00 | |
| NON GMO WHITE MAIZE ,FAQ | MT | 182.63 | 500.00 | 0.00 | 0.00 | DAP | KANENGO ,LILONGWE ,MALAWI | 0.00000 | 0.00 | |
| NON GMO WHITE MAIZE ,FAQ | MT | 185.63 | 2000.00 | | | | | | | |
| POPCORN ,FAQ | MT | 0.00 | 0.00 | | | | | | | |
| White Maize ,FAQ | MT | 0.00 | 0.00 | | | | | | | |
| White Maize ,FAQ | MT | 0.00 | 0.00 | | | | | | | |
| NON GMO WHITE MAIZE ,FAQ | MT | 0.00 | 0.00 | | | | | | | |
| WHITE MAIZE ,MW1 | MT | 0.00 | 0.00 | | | | | | | |

Deals on ACE this week

| Date | Contract No. | Commodity | UoM | Volume | Value USD | Incoterm | Delivery Place | Delivery Month |
|------------|--------------|-------------|-----|--------|-----------|----------|----------------|----------------|
| 06/12/2011 | 2011/142 | White Maize | MT | 78.20 | 239.46 | DAP | Lilongwe | December |
| 06/12/2011 | 2011/143 | White Maize | MT | 63.00 | 230.54 | FCA | Lilongwe | December |
| 06/12/2011 | 2011/144 | White Maize | MT | 18.50 | 260.48 | DAP | Blantyre | December |



USAID
FROM THE AMERICAN PEOPLE

COMPETE →
The Competitiveness and Trade Expansion Program

THANK YOU